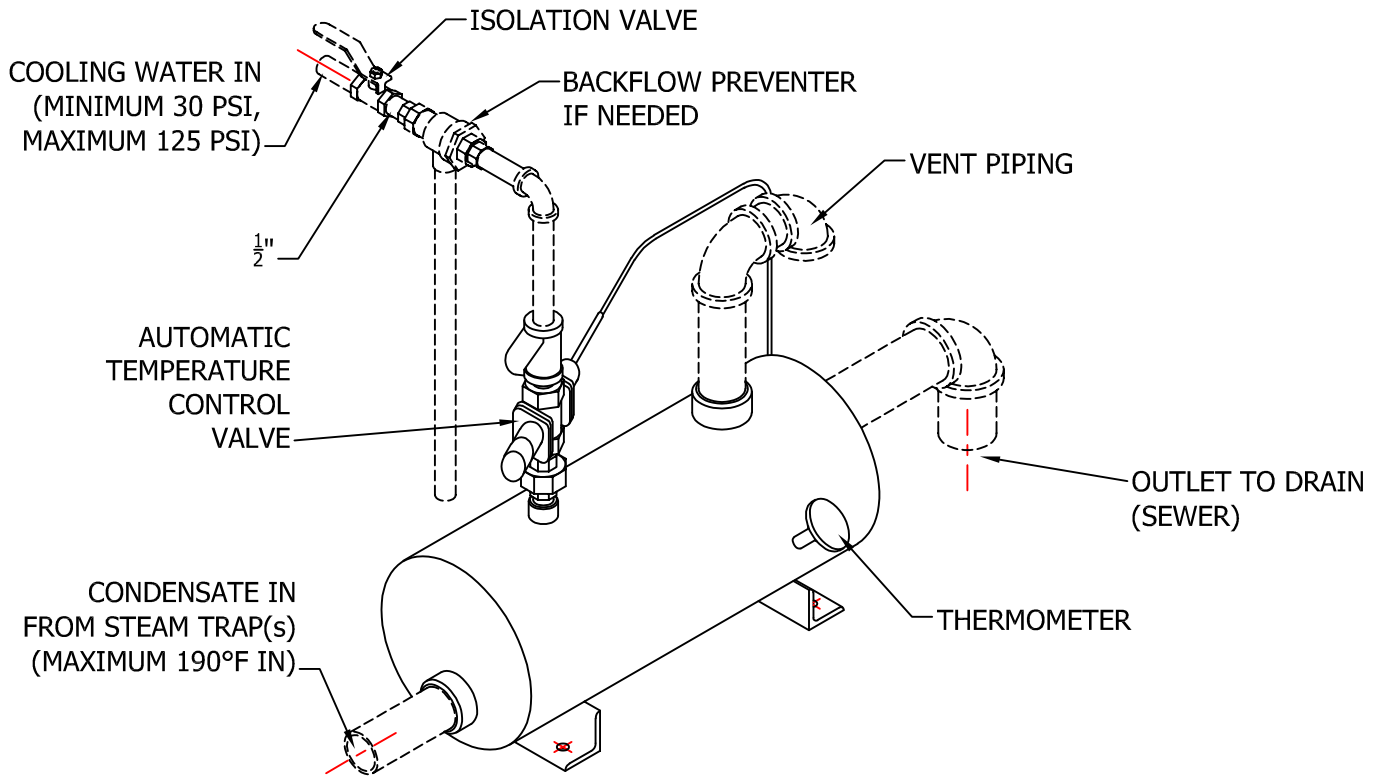


# INSTALLATION OF CONDENSATE COOLER



----- PROVIDED AND INSTALLED IN FIELD BY OTHERS

OUTLET TEMPERATURE FACTORY SET 120°F.  
 ADJUSTABLE 60°F - 140°F (OTHER RANGES AVAILABLE).  
 MAXIMUM CONDENSATE TEMPERATURE 190°F.

MAXIMUM OUTLET FLOW= UNIT RATING IN #/Hr       $GPM = \frac{\#/Hr}{500}$

STEAM CONDENSATE CAPACITY:

$$\frac{\text{OUTLET TEMP} - \text{COLD WATER TEMP}}{\text{CONDENSATE TEMP} - \text{COLD WATER TEMP}} \times (\text{MODEL RATING}) = \#/Hr \text{ STEAM CONDENSATE (IN \#/Hr)}$$

MODEL RATINGS in #/Hr	
MODEL	CAPACITY
FHI-CCLP-3000	3,000
FHI-CCLP-6000	6,000
FHI-CCLP-13000	13,000
FHI-CCLP-25000	25,000



## INSTALLATION INSTRUCTIONS CONDENSATE COOLER

SIZE <b>A</b>	FSCM NO.	DWG NO. 231118	REV
SCALE	JS	1/24	SHEET